



FC141

**APT 2 COPPER BEECH COURT LA GRANDE ROUTE DE
ST. JEAN, ST. HELIER, JERSEY, JE2 3FN**

Asking Price

£449,500

FINE & COUNTRY
JERSEY

Property details

FLYING FREEHOLD. We are delighted to present this modern two bedroom ground floor apartment. conveniently located on the outskirts of town close to surrounding countryside.

Fully renovated to a high standard this apartment is immaculate throughout, it briefly comprises of a good size living room, separate kitchen equipped with integrated high end appliances, 2 large double bedrooms one of which comes with an ensuite and a house bathroom.

Access to a privately owned courtyard is obtained from the master bedroom, providing space for outdoor entertaining and is fully enclosed and safe perfect for pets and children.

Benefiting from two designated parking spaces, this apartment offers a great first step on the ladder and for those looking for a quieter alternative to larger developments.

Outside

2 designated parking spaces

Access to a privately owned courtyard

Services

All mains services

Service charge £120 pcm includes building insurance, communal electricity and maintenance, management fees, sinking fund and water.

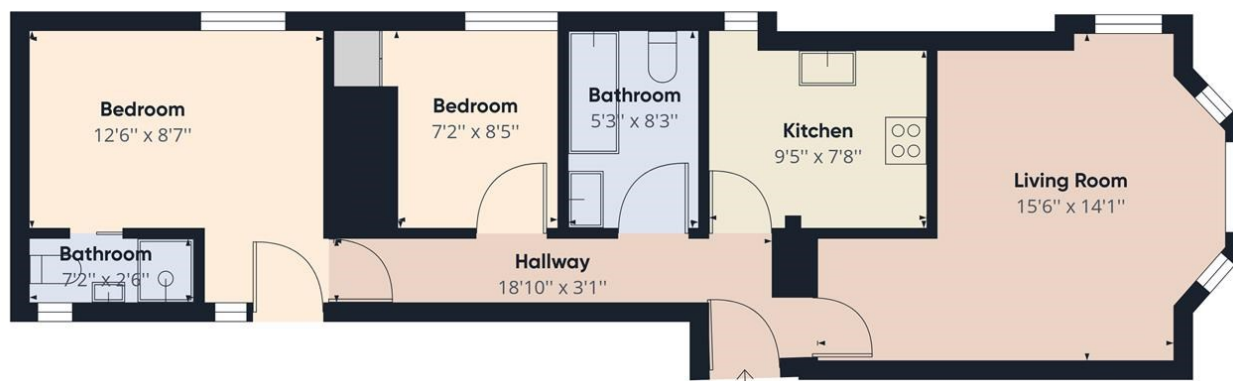
Fully double glazed

Directions

Proceed up Queens Road passing Motor Mall on your RHS, Copper Beech Court is approx 300m on the LHS







Approximate total area⁽¹⁾
582.35 ft²

(1) Excluding balconies and terraces

While every attempt has been made to ensure accuracy, all measurements are approximate, not to scale. This floor plan is for illustrative purposes only.

GIRAFFE 360

Call us on

01534 888855

jersey@fineandcountry.com

www.fineandcountry.je

5 King Street, St Helier, Jersey, JE2 4WF

Agents Note: Whilst every care has been taken to prepare these particulars, they are for guidance purposes only. All measurements are approximate and are for general guidance purposes only and whilst every care has been taken to ensure their accuracy, they should not be relied upon and potential buyers are advised to recheck the measurements.